

# Product catalog of Urbanwybe 2026





# TABLE OF CONTENTS

01

Corporate  
Workwear

02

Crafted Bags

03

Notebooks

04

Customized  
Toolkits

05

Coffee Mugs

06

Stylized Pens

07

Our Own  
Merchandise

08

Flexi Diary

+

Many More

PERFORMANCE MEETS STYLE

# CUSTOM JERSEY

Engineered for peak performance.  
Designed for every game.

MORE COLORS AVAILABLE



#### MOISTURE WICKING

Stays dry and cool during intense play.



#### FLEXIBLE STRETCH

Allows full range of motion with ease.



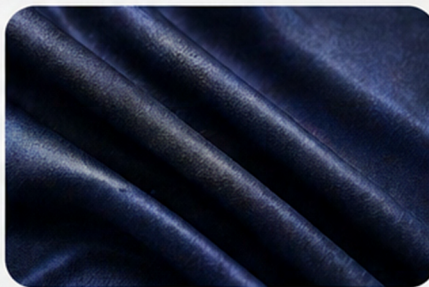
#### DURABLE & LIGHTWEIGHT

Built to last, made to perform.



#### REINFORCED NECKLINE

Enhanced durability for long-lasting wear.



#### PREMIUM POLYESTER LYCRA

Smooth, glossy finish with breathable comfort.



#### QUALITY STITCHING

Precision stitching for strength and style.



#### LIGHTWEIGHT

Feel free. Move fast.



#### BUILT TO LAST

Performance that goes the distance.



#### BREATHABLE

Air flows in, heat stays out.



#### STAY SHARP

Colors that pop, game after game.

CORPORATE  
**WORKWEAR**  
POLO

Professional look.  
All-day performance.



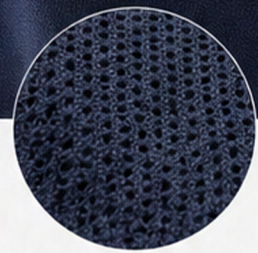
**BREATHABLE**  
Keeps you cool  
and comfortable



**LIGHTWEIGHT**  
Designed for ease  
of movement

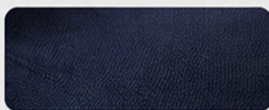


**DURABLE**  
Built to last through  
every workday

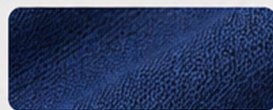


SMART FABRIC.  
SHARPER YOU.

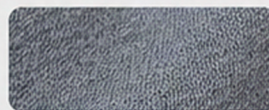
AVAILABLE IN  
PREMIUM FABRICS



1 POLYESTER



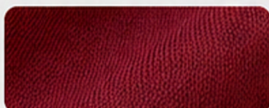
2 DOT KNIT



3 NOKIA



4 BIO-WASH COTTON



5 SPUN MATTY



6 KULTY



7 PC KULTY



8 LYCRA / SPANDEX

# Everyday Canvas

# **Durable, stylish**

# **Crafted With Care.**

## **Express Yourself** Through Our Brand

Designed for everyday utility with a refined edge, our canvas bags combine strength, style, and sustainability. Built from high-quality fabric with sturdy handles, they are made to last through daily use while maintaining a clean, premium look. Perfect for corporate gifting, each bag can be customized to reflect your brand—turning a simple essential into a statement of identity. Made for everyday use. Designed to stand out.

**Packaging that speaks for your brand.**



The most iconic, ever.

[www.urbanwybe.com](http://www.urbanwybe.com)



(Jute Bags)

**Designed for modern businesses,** our range of bags blends durability with refined aesthetics - ideal for both corporate gifting & premium packaging.

**Crafted from high-quality materials** with sturdy construction, these bags are made to carry more than just products - they carry your brand presence.



(Canvas Bag)

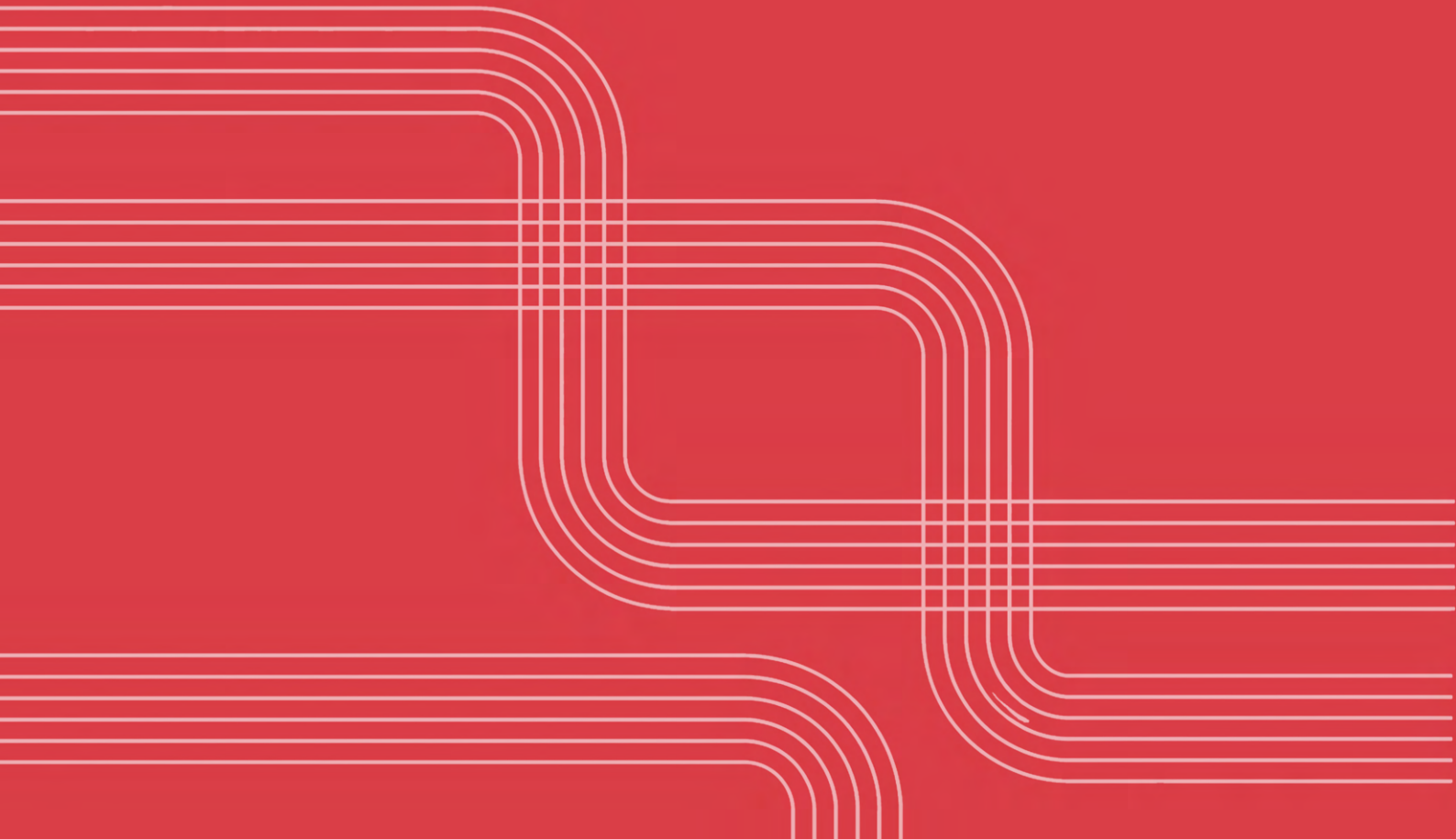


(Cotton Bag)

**Available in multiple styles & fully customizable,** offers a practical yet impactful way to elevate how your brand is presented and remembered.

# Customized Toolkits

Pack Combo of customized products for  
your specific need.



# Customized CORPORATE TOOLKIT

Thoughtful gifts.  
Stronger connections.

Laptop Bag

Bamboo  
Bottle



Diary

Coffee Mug



Customized  
Tshirt



Customized  
Key Chain



Bamboo  
Pen

# Customized Travel Toolkit

Rucksack Bag

Bamboo  
Water Bottle



Bamboo  
Diary



Customized  
Tshirt



Bamboo  
Comb



Bamboo  
Toothbrush (Set)

# Customized **GYM TOOLKIT**

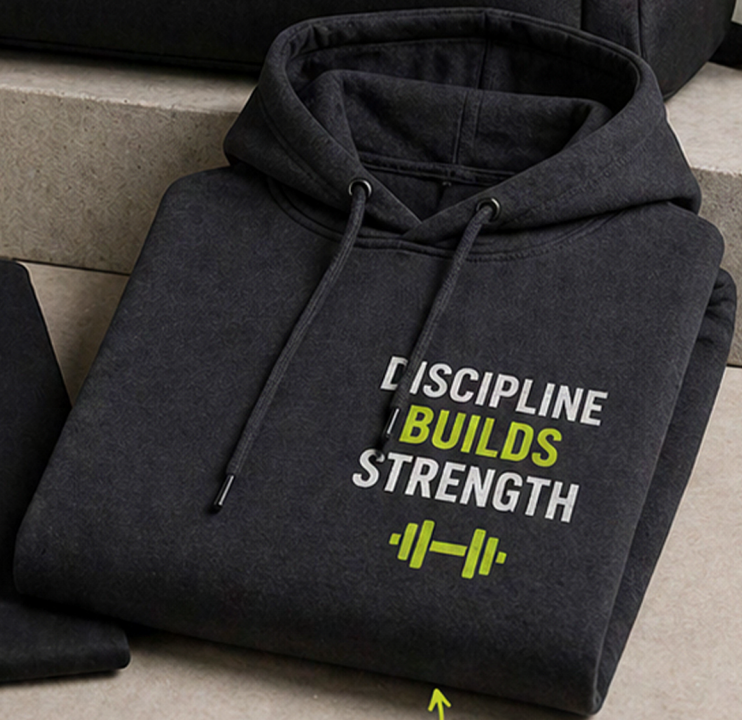


Gym Bag

Bamboo  
Water Bottle



Customized  
Tshirt



Customized  
Hoody



Stylized Pen

# Collection

The most iconic, ever.

[www.urbanwybe.com](http://www.urbanwybe.com)

# Bamboo Pen

## ECO-FRIENDLY MATERIAL

Crafted from 100% natural bamboo. Renewable, biodegradable & environmentally responsible.



## STAINLESS STEEL CLIP

Strong and durable clip for secure hold. Rust-resistant stainless steel finish.



## LASER ENGRAVING AREA

Perfect for logo, brand name or custom message. Natural engraving for a premium look.



## COMFORTABLE GRIP

Smooth natural bamboo surface for a comfortable and balanced hold.



## BALL POINT TIP

Smooth writing with consistent ink flow. 0.7mm tip for precise and clean writing.



11 mm

140 mm

## PEN STRUCTURE



**1 TOP PLUNGER**  
Stainless steel click mechanism.



**2 UPPER RING**  
Stainless steel decorative ring.



**3 STAINLESS STEEL CLIP**  
Durable clip for easy attachment.



**4 BAMBOO BODY**  
Natural bamboo barrel.



**5 LOWER CONE**  
Stainless steel tip holder.



**6 REFILL (INK CARTRIDGE)**  
High quality ink refill for smooth writing.



**7 BALL POINT TIP**  
0.7mm tip for precise writing.

## COLOR & FINISH



Natural bamboo finish with stainless steel accents.

## PERFECT FOR



Corporate Gifts



Promotional Giveaways



Events



Eco-Friendly Brands

## WHY CHOOSE BAMBOO PEN?



Sustainable Choice



Lightweight & Durable



Unique Natural Grain



Plastic-Free Alternative



Great Branding Opportunity

## PRODUCT SPECIFICATIONS

Material	: Natural Bamboo & Stainless Steel
Tip Size	: 0.7mm Ball Point
Ink Color	: Black
Length	: 140 mm
Diameter	: 11 mm
Weight	: Approx. 12g

# Seed Pen

## ECO-FRIENDLY MATERIAL

Made from recycled paper and natural ingredients. Biodegradable & environmentally responsible.



## COMFORTABLE GRIP

Smooth natural paper surface for a comfortable and balanced hold.



## PLANTABLE BODY

After use, plant the pen in soil. The capsule disintegrates and seeds grow into plants.



## SEED CAPSULE

Contains carefully selected seeds to grow into herbs, flowers or vegetables.



## BALL POINT TIP

Smooth writing with consistent ink flow. 0.7mm tip for precise and clean writing.



140 mm

11 mm

## PEN STRUCTURE



### 1 TOP CAP

Secure cap to protect the pen when not in use.



### 2 CLIP

Sturdy clip for easy attachment to notebooks or pockets.



### 3 PAPER BODY

Recycled paper barrel embedded with a seed capsule.



### 4 SEED CAPSULE

Contains premium quality seeds.



### 5 REFILL (INK CARTRIDGE)

High quality ink refill for smooth and long lasting writing.



### 6 BALL POINT TIP

0.7mm tip for precise writing.

## HOW IT GROWS



### 1. Plant

Put the used pen in soil.



### 2. Water

Water regularly and keep the soil moist.



### 3. Germinate

Seeds germinate in 5-10 days.



### 4. Grow

Enjoy your plant as it grows naturally.

## PERFECT FOR



Corporate Gifts



Promotional Giveaways



Events & Workshops



Eco-Friendly Brands

## PRODUCT SPECIFICATIONS

Material	: Recycled Paper, Seed Capsule & Plastic (Clip & Cap)
Ink	: High Quality Ink Refill
Tip Size	: 0.7mm Ball Point
Ink Color	: Black
Length	: 140 mm
Diameter	: 11 mm
Weight	: Approx. 10g

# Kraft Paper Pen



## ECO-FRIENDLY MATERIAL

Made from kraft paper.  
Renewable, biodegradable & environmentally responsible.



## COMFORTABLE GRIP

Smooth kraft paper surface for a comfortable and balanced hold.



## LIGHTWEIGHT & DURABLE

Strong and lightweight design for everyday use and easy carrying.



## LASER ENGRAVING AREA

Perfect for logo, brand name or custom message.  
Natural kraft finish for a premium look.



## BALL POINT TIP

Smooth writing with consistent ink flow.  
0.7mm tip for precise and clean writing.




11 mm

140 mm

## PEN STRUCTURE

- 1 TOP PART**  
Kraft paper top with a clean finished edge.
- 2 PAPER CLIP**  
Sturdy kraft paper clip for easy attachment.
- 3 KRAFT PAPER BODY**  
High quality kraft paper barrel. Natural and sustainable.
- 4 LOWER CONE**  
Durable plastic holder for tip support.
- 5 REFILL (INK CARTRIDGE)**  
High quality ink refill for smooth and long lasting writing.
- 6 BALL POINT TIP**  
0.7mm tip for precise writing.

## COLOR & FINISH

 Natural kraft paper finish for an earthy and minimalist look.

## HOW IT WORKS



### 1. Write

Use the pen for your daily writing needs.



### 2. Recycle

Once done, recycle the pen responsibly.



### 3. Reuse

Kraft paper can be recycled & reused.



### 4. Sustain

A small step towards a greener planet.

## PERFECT FOR



Corporate Gifts



Promotional Giveaways



Events & Workshops



Eco-Friendly Brands

## PRODUCT SPECIFICATIONS

Material : Kraft Paper & Plastic  
Tip Size : 0.7mm Ball Point  
Ink Color : Black  
Length : 140 mm  
Diameter : 11 mm  
Weight : Approx. 7g



SUSTAINABLE  
NATURAL  
RESPONSIBLE



**Product**  
Bamboo Diary



**Material**  
100% Bamboo



**Pages**  
200 Lined Pages



## Customization

Every kind of customization is possible



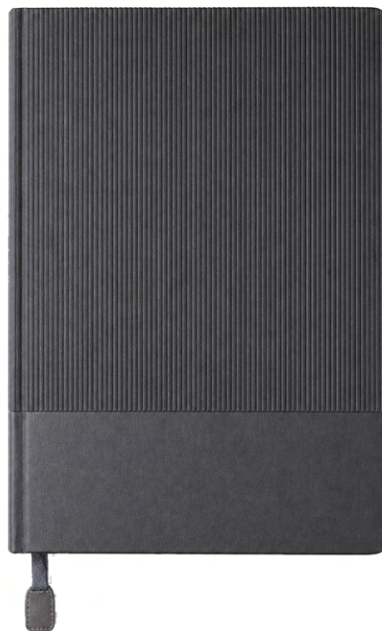
**Product**  
Flexi Diary



**Material**  
Banana Fibre



**Pages**  
200 Lined Pages



## Customization

Every kind of customization is possible



**Product**  
Plantable Diary



**Eco**  
100% Biodegradable



**Pages**  
80 Seed-Embdded



## Customization

Every kind of customization is possible

# Premium Coffee Mugs

 SUSTAINABLE BANBOD	 LIGHTWEIGHT	 HEAT-RESISTANT
 DURABLE BAMBOO BODY	 SPLASH PROOF LID	 SCRATCH RESISTANT
 NATURAL & BPA FREE	 INSULATED DESIGN	 SMOOTH & PLEASANT GRIP
 EASY TO CLEAN	 LEAK-PROOF LOCKING MECHANICH	 ECO-FRIENDLY & GIFTABLE

Elevate your corporate gifting with mugs designed to impress. Our bamboo range combines natural aesthetics with a durable steel interior—lightweight, insulated, and crafted for a premium feel. For a timeless choice, our ceramic mugs offer a clean, elegant finish, perfect for high-quality branding and everyday use.

Each piece is fully customizable to reflect your identity, making it more than just a gift—it's a lasting brand experience.



The most iconic, ever.

[www.urbanwybe.com](http://www.urbanwybe.com)

# Custom Keychains & Keytags

SMALL DETAIL.  
BIG IMPACT.

Thoughtfully crafted  
keychains and keytags  
that carry your brand,  
everywhere.



FULLY  
CUSTOMIZABLE



PREMIUM  
MATERIALS



BUILT FOR  
EVERYDAY USE



PERFECT FOR  
EVERY OCCASION

YOUR BRAND. YOUR WAY.



# Your Brand, Stuck in Their Mind.

CUSTOM STICKERS THAT LEAVE A LASTING IMPRESSION.



PREMIUM  
QUALITY



VIBRANT  
PRINTING



WATER  
RESISTANT



EASY  
TO PEEL



MADE  
TO CARE